

CW(S) Series Dynamic Load Weighing Module Automated Production Lines Weighing Scale Module

Our Product Introduction

for more products please visit us on sg-packs.com

Basic Information

- Place of Origin: CHINA
- Brand Name: SG
- Certification: ISO9001
- Model Number: CW(S)
- Minimum Order Quantity: 1
- Price: 10000USD
- Packaging Details: wooden box
- Delivery Time: 3months
- Payment Terms: T/T, D/P, D/A, L/C
- Supply Ability: 10per year

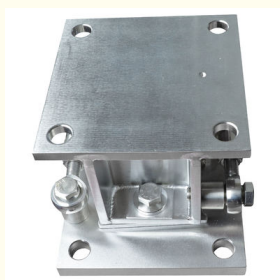


Product Specification

- Product Name: CW(S) Series Dynamic Load Weighing Module Automated Production Lines
- Material: Stainless Steel
- Power Supply: DC 24V
- Protection Grade: IP65
- Response Time: $\leq 20\text{ms}$
- Storage Temperature: $-20^{\circ}\text{C} \sim +70^{\circ}\text{C}$
- Accuracy: $\pm 0.1\%$
- Humidity: $\leq 85\%\text{RH}$
- Highlight: **Dynamic Weighing Module, Load Weighing Module, Production Lines weighing scale module**



More Images



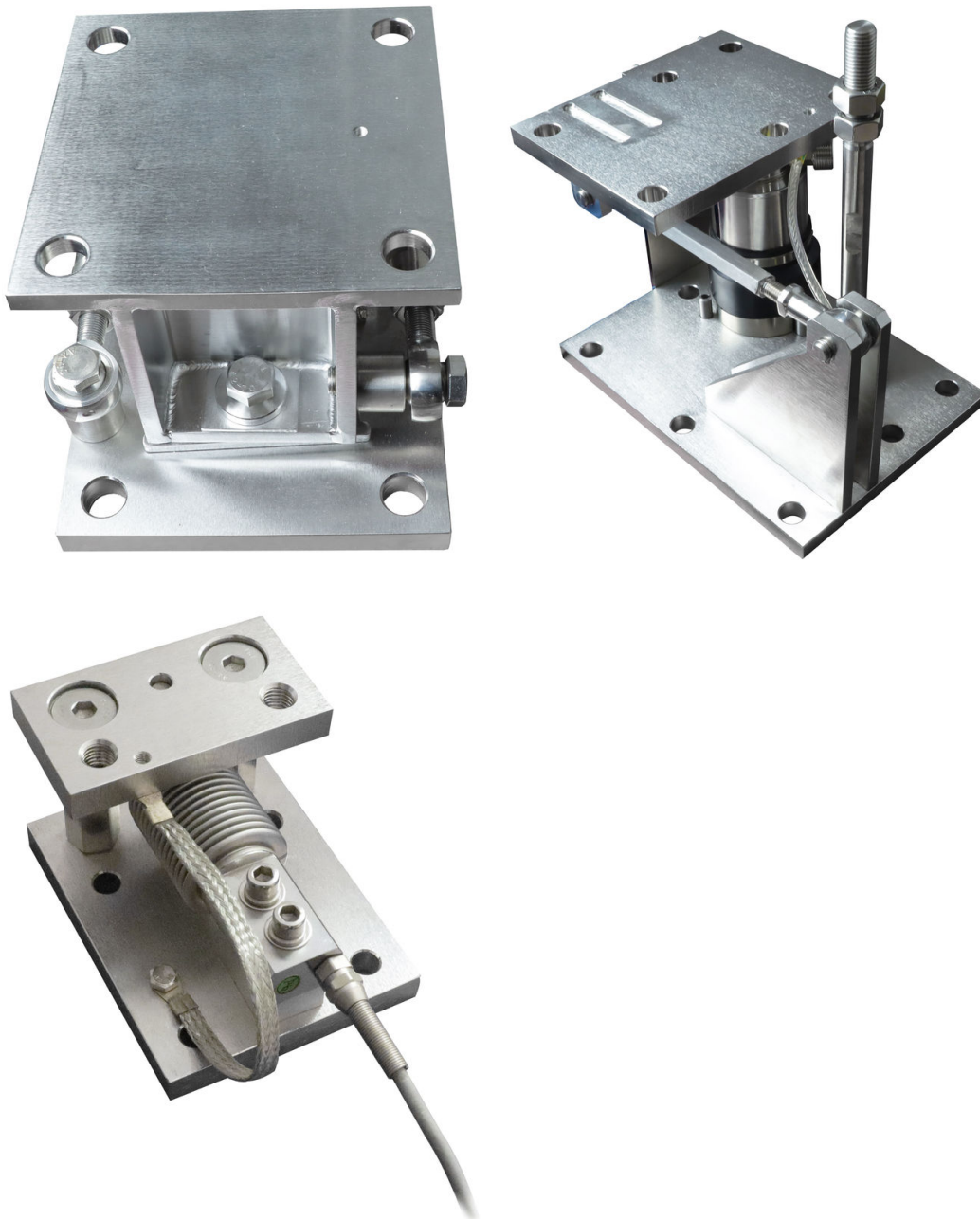
Product Description

CW(S) series dynamic load weighing module

CW(S) series dynamic load weighing module is a device used for dynamic weighing, which is usually used in industrial production, logistics and transportation, warehousing management and other fields. The following is a brief introduction to the CW(S) series dynamic load weighing module:

1. Application fields: CW(S) series dynamic load weighing modules are widely used in various situations that require dynamic weighing, such as industrial automated production lines, logistics loading and unloading lines, warehousing and logistics management systems, etc.
2. Working principle: The CW(S) series dynamic load weighing module uses sensors to monitor the weight of objects or goods on conveyor belts or transportation equipment in real time, and transmits the data to the weighing system for processing and recording.
3. Features: This kind of weighing module usually has the characteristics of high precision, fast response, reliability and stability, can achieve accurate measurement of objects of different weights, and is suitable for high-speed transportation and continuous weighing working environments.
4. Model specifications: CW(S) series dynamic load weighing modules may have different models and specifications. You can choose a suitable model according to specific needs, such as different weighing ranges, operating temperatures, protection levels, etc.

Generally speaking, the CW(S) series dynamic load weighing module is an efficient and accurate dynamic weighing device that can help companies achieve accurate weighing and management of products and goods, and improve production efficiency and quality control levels.



Product Details:

Using high-quality sensors, high weighing accuracy.

The self-stable weighing pressure-bearing design always maintains the correct loading position and has good weighing repeatability.

Easy and fast installation

Easy maintenance, saving downtime and maintenance time

It is suitable for weighing and process weighing control in places with horizontal impact force, such as conveyor roller scales.

CW(S) series dynamic load weighing module is a device used to measure and monitor the weight of objects. They are commonly used in a wide range of industrial, commercial and logistics areas. The following are the main functions of these modules:

1. Weighing accuracy: CW(S) series dynamic load weighing modules use high-precision sensors and advanced weighing algorithms to provide accurate weight measurement results. This is important for applications that require precise control of the weight of items, such as quality control during goods sorting, packaging and shipping.
2. High load-bearing capacity: These weighing modules are designed to be sturdy and durable, capable of withstanding the weighing of large and heavy-weight objects. They typically have high load capacities and are suitable for a variety of industrial environments and heavy-duty applications.
3. Real-time monitoring: CW(S) series dynamic load weighing module can monitor the weight changes of objects in real time. By connecting with computer systems or data acquisition equipment, automated data recording and real-time monitoring can be achieved, improving production efficiency and quality control levels.
4. Reliability and stability: These weighing modules are carefully designed and tested to ensure stable and reliable performance under various working conditions. They are typically interference-resistant and can cope with the effects of vibration, temperature changes and other environmental factors on measurement results.
5. Flexibility: CW(S) series dynamic load weighing modules have flexible installation and integration options and can be customized according to the needs of specific applications. They can be integrated with other equipment and systems, such as conveyor belts, automated production lines, or computer control systems, to achieve comprehensive logistics management and automated control.

In short, the CW(S) series dynamic load weighing modules provide high precision, high load-bearing capacity, real-time monitoring and stable and reliable weight measurement solutions, and are widely used in logistics, production and quality management in various industries.

PACKING&SHIPPING





WHY CHOOSE US



We are a professional coating filling machine manufacturer.



The company has set up a product research and development center.



We guarantee the high quality of our products.



The company has professional and technical personnel to solve your problems.



MAIN PRODUCTS





SG (Changzhou) Intelligent Technology Co., Ltd.



18112895665



rfmikeliu@gmail.com



sg-packs.com

Changzhou, Jiangsu Province, China